

PROJECT NAME: STEWART ROAD

LIMITS: 7 1/2 MILE ROAD TO FM 3005

CITY: GALVESTON

PRECINCT: 2

DESCRIPTION: MILL AND OVERLAY  
EXISTING ASPHALT ROAD

2025 BOND ALLOCATION: ROAD

ENGINEER'S ESTIMATE: \$6,500,000

- PROJECT CONSTRAINTS:
- FUNDED PRIMARILY BY SURFACE TRANSPORTATION BLOCK GRANT.

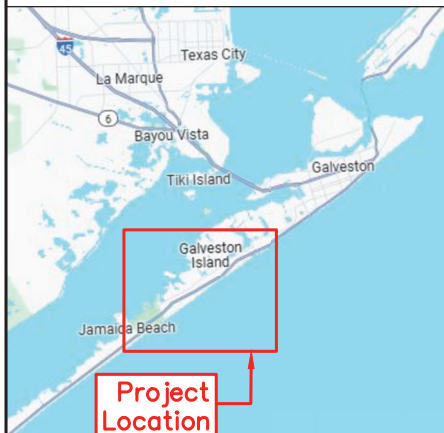
### Legend

 Project Limit

Date: 12/05/2024



GALVESTON COUNTY  
2025 MOBILITY BOND PROGRAM



VICINITY MAP





PROJECT NAME: SEAWALL BOULEVARD

LIMITS: 61ST STREET TO 6TH STREET

CITY: GALVESTON

PRECINCT: 2

DESCRIPTION: MILL AND OVERLAY  
EXISTING ASPHALT ROAD

2025 BOND ALLOCATION: ROAD

ENGINEER'S ESTIMATE: \$10,000,000

PROJECT CONSTRAINTS:  

- FUNDED PRIMARILY BY SURFACE TRANSPORTATION BLOCK GRANT.

### Legend

 Project Limit

Date: 12/05/2024

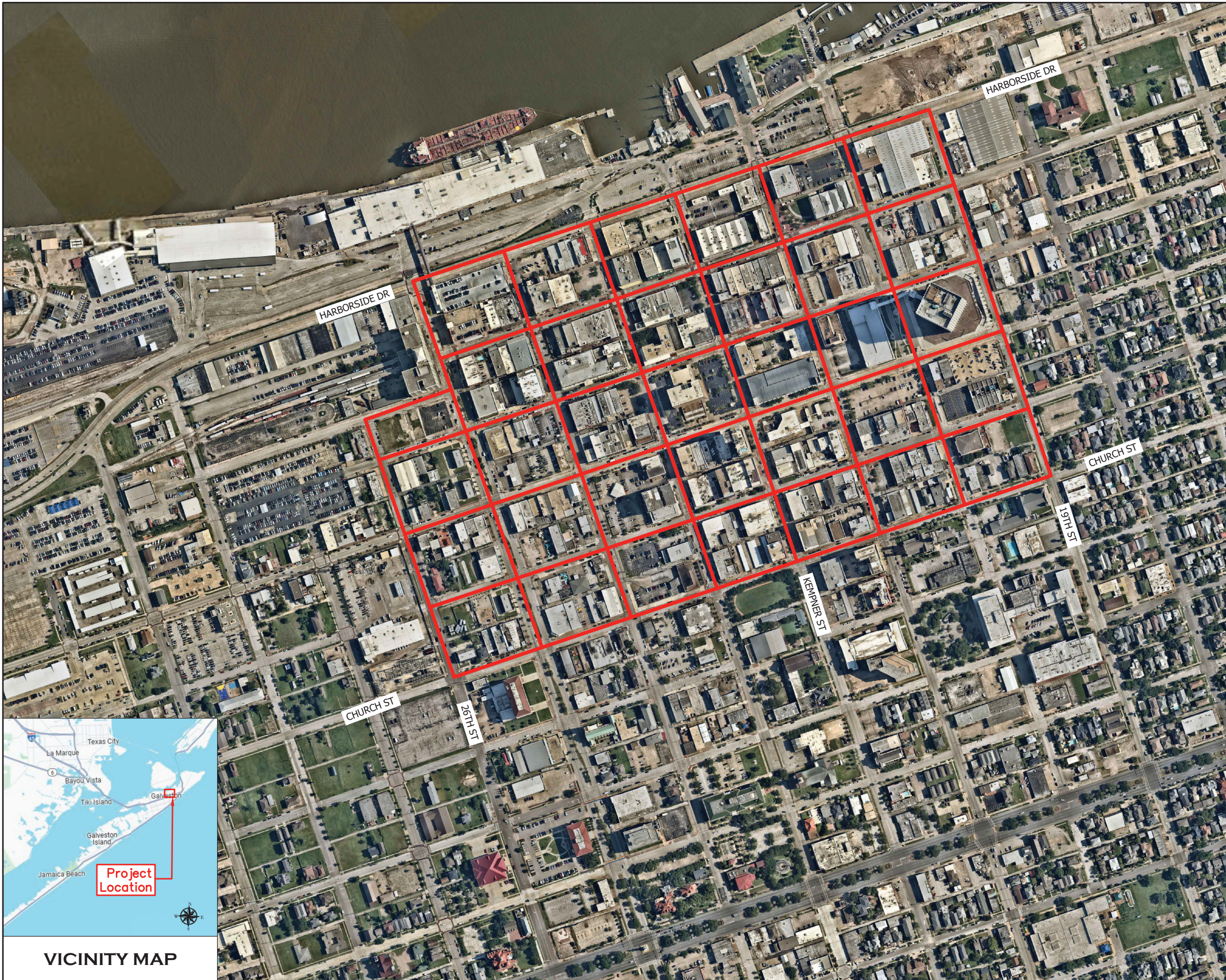


GALVESTON COUNTY  
2025 MOBILITY BOND PROGRAM



VICINITY MAP





PROJECT NAME: DOWNTOWN LIVABLE COMMUNITIES

LIMITS: STREETS BOUND BY 19TH AND 26TH, AND BY HARBORSIDE AND CHURCH

CITY: GALVESTON

PRECINCT: 2

DESCRIPTION: STREET/DRAINAGE IMPROVEMENTS, PEDESTRIAN ELEMENT IMPROVEMENTS, BIKE LANES, ETC.

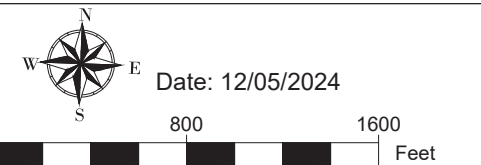
2025 BOND ALLOCATION: ROAD

ENGINEER'S ESTIMATE: \$24,000,000

- PROJECT CONSTRAINTS:
- LOCAL BUSINESS ACCESSIBILITY DURING CONSTRUCTION.

### Legend

 Project Limit



GALVESTON COUNTY  
2025 MOBILITY BOND PROGRAM



VICINITY MAP