



PROJECT NAME: HANSON ROAD

CITY: KEMAH

PRECINCT: 1


DESCRIPTION:  
ASPHALT TO CONCRETE CONVERSION

2025 COUNTY BOND ALLOCATION:  
ROAD & BRIDGE

ENGINEER'S ESTIMATE: \$425,000

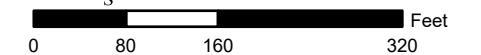
PROJECT CONSTRAINTS:  
- NONE ANTICIPATED

### Legend

 Project Limit



1:2,000  
Date: 11/21/2024



GALVESTON COUNTY  
2025 MOBILITY BOND PROGRAM



VICINITY MAP





PROJECT NAME: SOUTH KEMAH DRIVE

CITY: KEMAH

PRECINCT: 1

DESCRIPTION:  
ROAD WIDENING AND CONCRETE CONVERSION

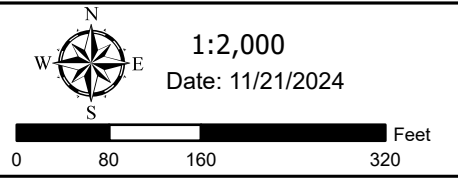
2025 COUNTY BOND ALLOCATION:  
ROAD & BRIDGE

ENGINEER'S ESTIMATE: \$870,000

PROJECT CONSTRAINTS:  
- REQUIRES ADDITIONAL ROW ACQUISITION

**Legend**

Project Limit



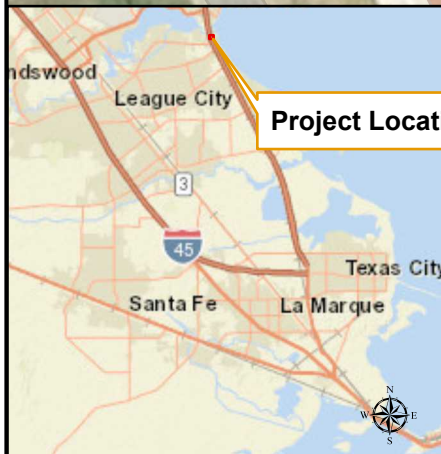
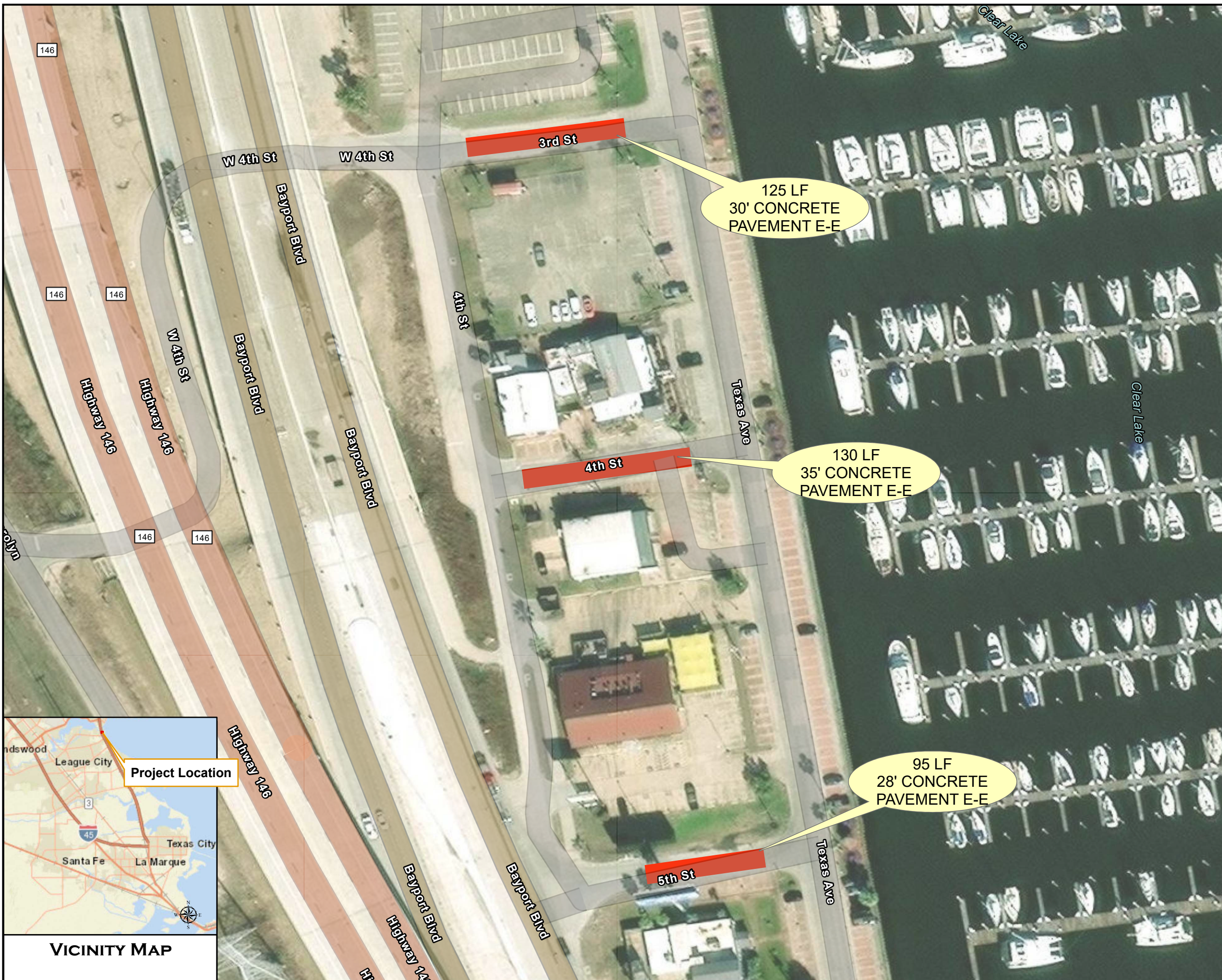
GALVESTON COUNTY  
2025 MOBILITY BOND PROGRAM



**VICINITY MAP**

Source: D:\Projects\2024\12051\_Galveston\_County\01\_Galveston\_County\Program\_Management\300\_DEPT\_DOCS\312\_MuniKemah\GALVESTON COUNTY 2025.aprx





VICINITY MAP

PROJECT NAME: 3RD, 4TH, & 5TH STREETS  
 CITY: KEMAH  
 PRECINCT: 1

DESCRIPTION:  
 ASPHALT TO CONCRETE CONVERSION

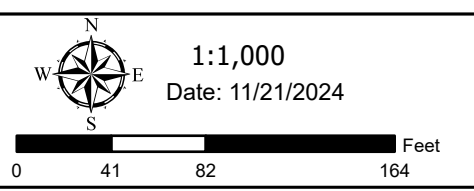
2025 COUNTY BOND ALLOCATION:  
 ROAD & BRIDGE

ENGINEER'S ESTIMATE: \$240,000

PROJECT CONSTRAINTS:  
 - NONE ANTICIPATED

**Legend**

 Project Limit



GALVESTON COUNTY  
 2025 MOBILITY BOND PROGRAM







PROJECT NAME: HARRIS AVENUE

CITY: KEMAH

PRECINCT: 1

DESCRIPTION:  
ASPHALT TO CONCRETE CONVERSION

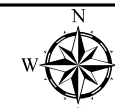
2025 COUNTY BOND ALLOCATION:  
ROAD & BRIDGE

ENGINEER'S ESTIMATE: \$120,000

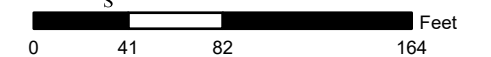
PROJECT CONSTRAINTS:  
- NONE ANTICIPATED

### Legend

 Project Limit



1:1,000  
Date: 11/21/2024



GALVESTON COUNTY  
2025 MOBILITY BOND PROGRAM



VICINITY MAP