

VICINITY MAP

PROJECT NAME: 2ND STREET SEGMENT A
 CITY: HITCHCOCK
 PRECINCT: 2

DESCRIPTION:
 PAVEMENT & DRAINAGE IMPROVEMENTS

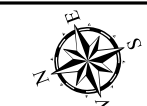
2025 COUNTY BOND ALLOCATION:
 ROAD & BRIDGE

ENGINEER'S ESTIMATE: \$1,520,000

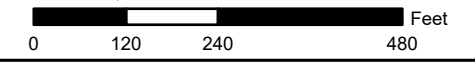
- PROJECT CONSTRAINTS:
- COORDINATION WITH TXDOT FOR CONNECTION TO HIGHWAY 6
 - RAILROAD CROSSING
 - REQUIRES ADDITIONAL ROW AQUISITION
 - EXISTING UTILITIES

Legend

Project Limit



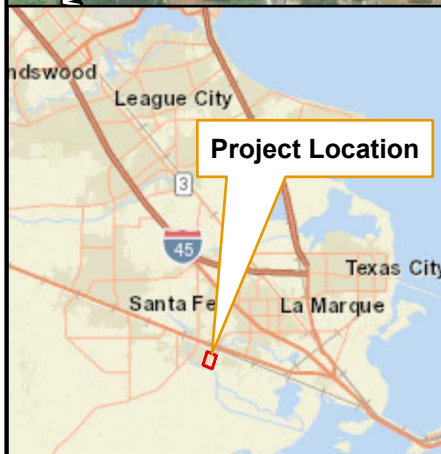
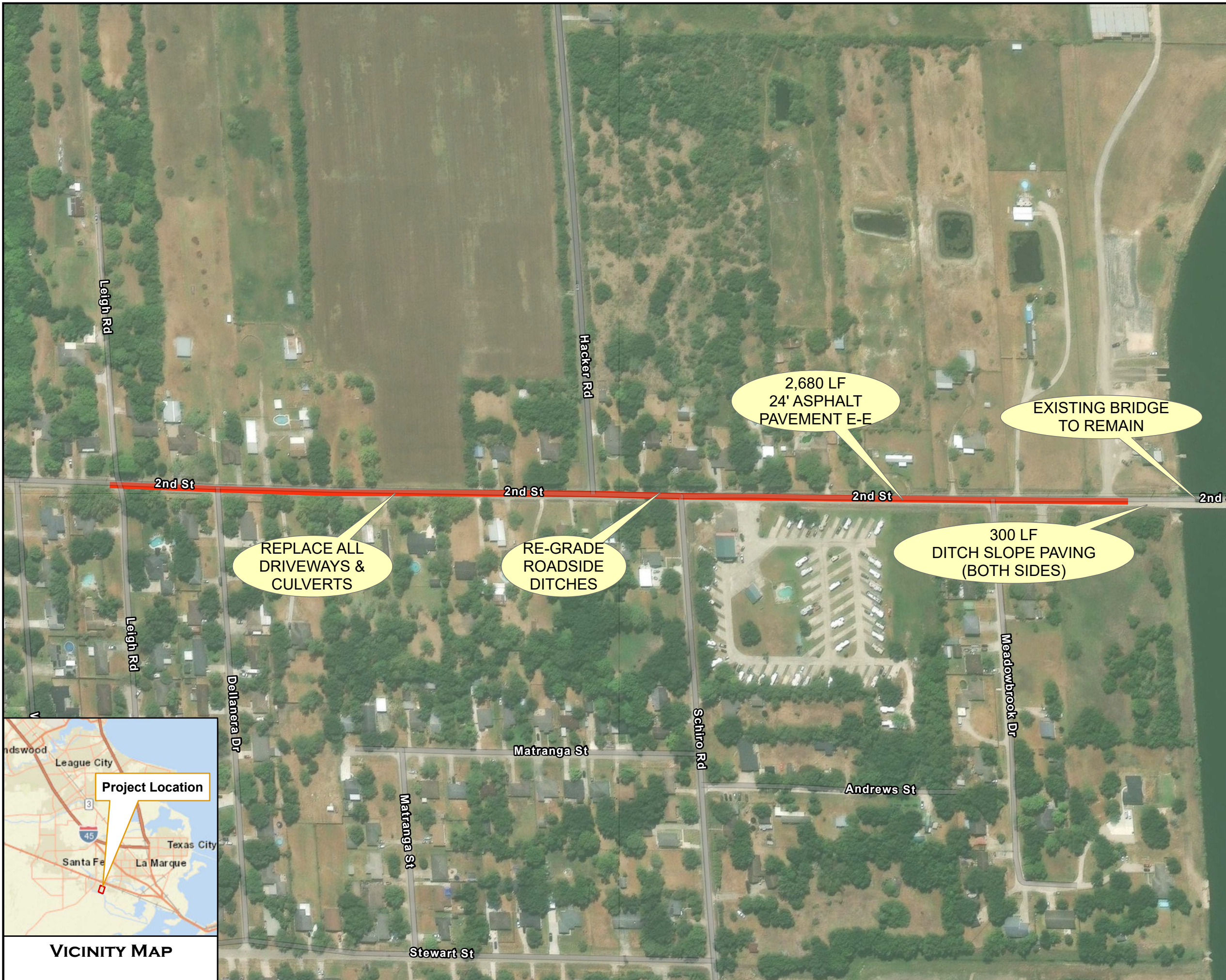
1:3,000
 Date: 11/21/2024



GALVESTON COUNTY
 2025 MOBILITY BOND PROGRAM



Source: D:\Projects\2024\12051_Galveston_County\01_Galveston_County\Program_Management\300_DEPT_DOCS\312_MuniHitchcock\GALVESTON COUNTY 2025.aprx



VICINITY MAP

PROJECT NAME: 2ND STREET SEGMENT B
 CITY: HITCHCOCK
 PRECINCT: 2

DESCRIPTION:
 PAVEMENT & DRAINAGE IMPROVEMENTS
 2025 COUNTY BOND ALLOCATION:
 ROAD & BRIDGE

ENGINEER'S ESTIMATE: \$1,925,000

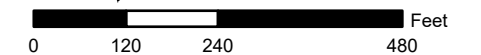
PROJECT CONSTRAINTS:
 - REQUIRES ADDITIONAL ROW AQUISION

Legend

Project Limit

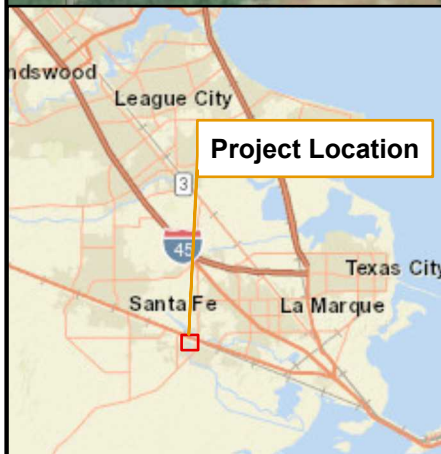
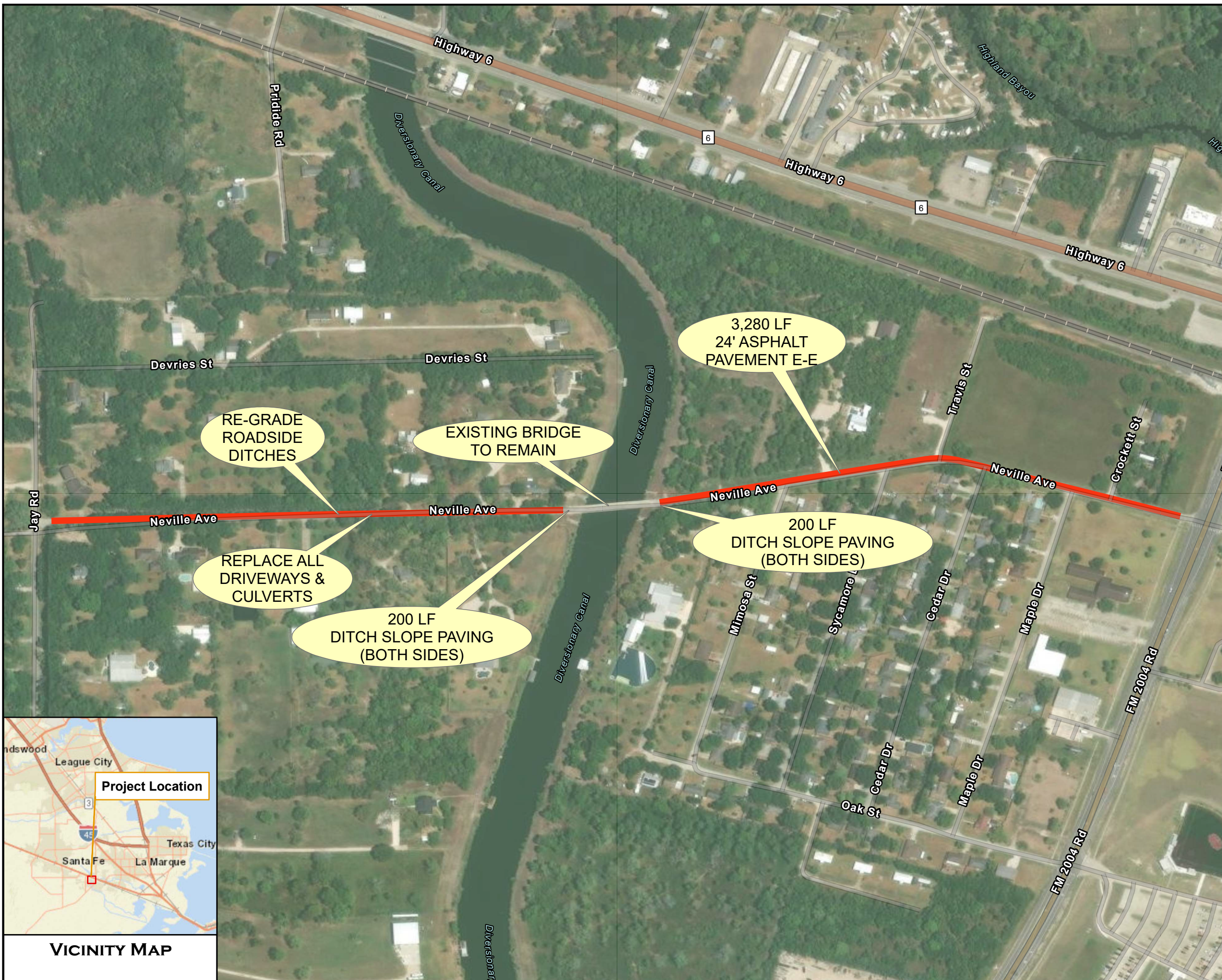


1:3,000
 Date: 11/21/2024



GALVESTON COUNTY
 2025 MOBILITY BOND PROGRAM





VICINITY MAP

PROJECT NAME: NEVILLE AVENUE

CITY: HITCHCOCK

PRECINCT: 2

DESCRIPTION:
PAVEMENT & DRAINAGE IMPROVEMENTS

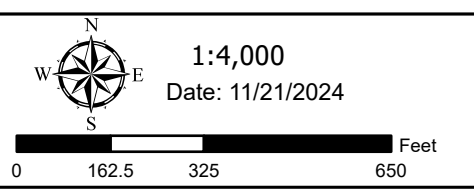
2025 COUNTY BOND ALLOCATION:
ROAD & BRIDGE

ENGINEER'S ESTIMATE: \$2,070,000

PROJECT CONSTRAINTS:
- REQUIRES ADDITIONAL ROW AQUISITION

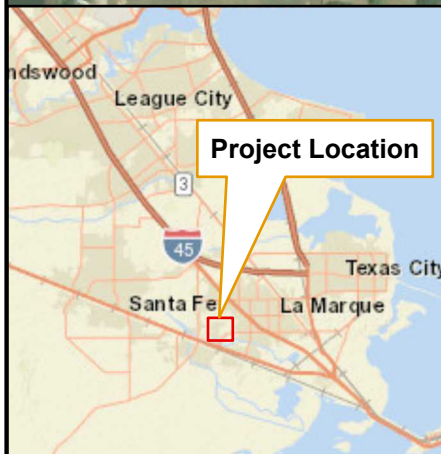
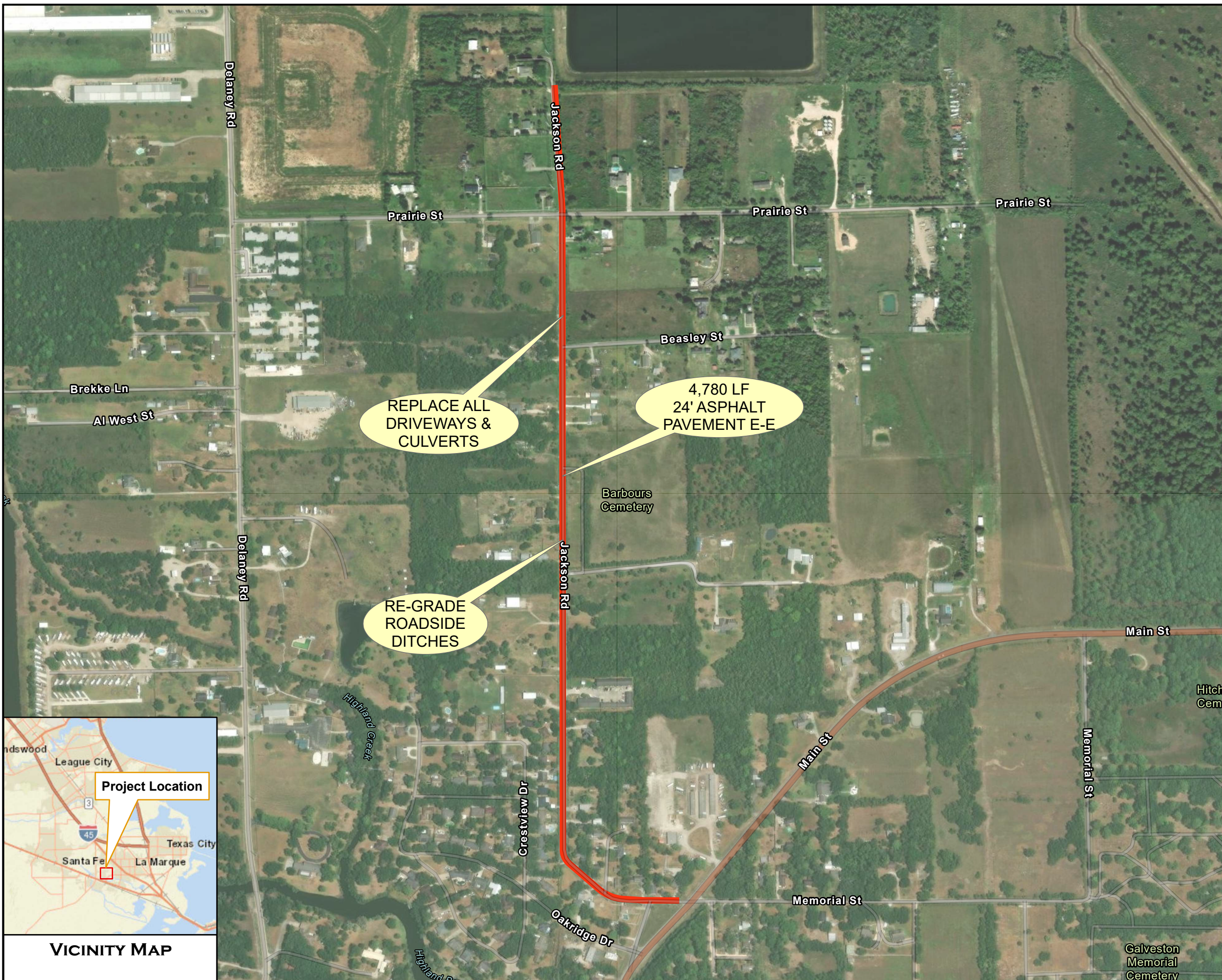
Legend

Project Limit



GALVESTON COUNTY
2025 MOBILITY BOND PROGRAM





VICINITY MAP

PROJECT NAME: JACKSON STREET
 CITY: HITCHCOCK
 PRECINCT: 2

DESCRIPTION:
 PAVEMENT & DRAINAGE IMPROVEMENTS

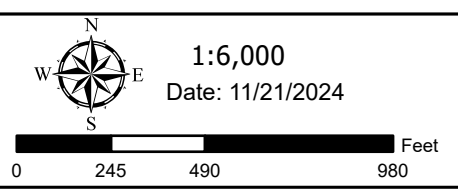
2025 COUNTY BOND ALLOCATION:
 ROAD & BRIDGE

ENGINEER'S ESTIMATE: \$2,950,000

PROJECT CONSTRAINTS:
 - REQUIRES ADDITIONAL ROW AQUISION

Legend

Project Limit



GALVESTON COUNTY
 2025 MOBILITY BOND PROGRAM

